

Koban 30[®]

“The Best Weapon for Pythium Control”

Koban 30 is a contact fungicide that will quickly kill the spores of all species of Pythium. Having a “contact” mode of action lessens the chance that any Pythium species will ever develop resistance to this fungicide. Resistance has been an issue with products that have a “penetrant” mode of action.

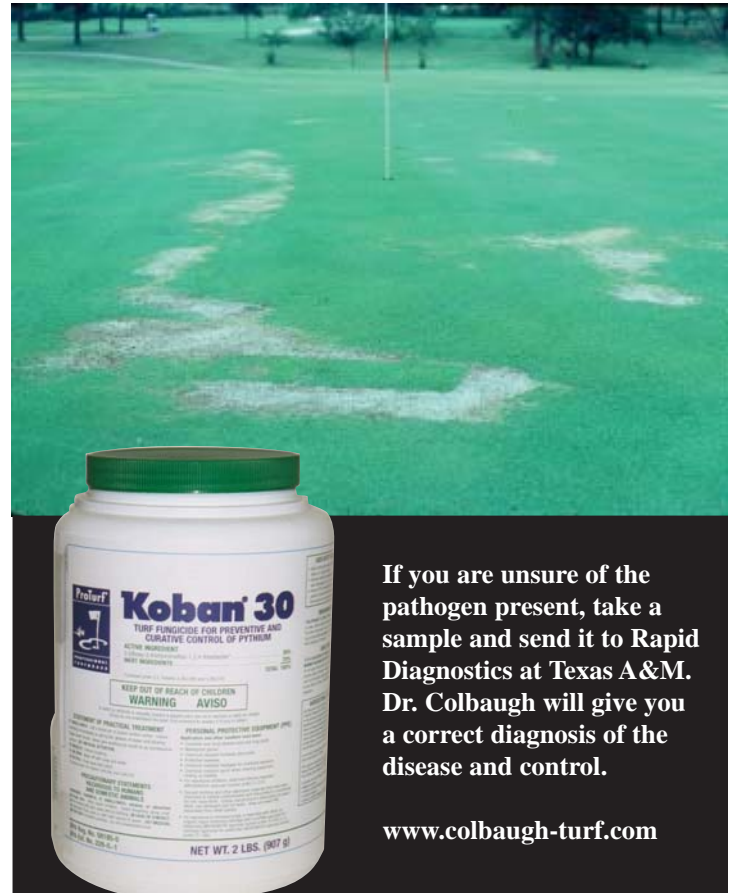
Koban 30 is a wettable powder formulation packaged in 2 lb containers / 6 containers per case.

Koban 30 can be applied as a preventative drench to reduce the risk for future infections, or as a curative application when symptoms appear.

For a **preventative** rate, apply Koban 30 at 2 ozs. of product in 5 gals. of water for each 1,000 sq. ft. Depending on disease pressure a repeat application maybe needed in 10-14 days.

For a **curative** rate when pythium is present apply 4.5 ozs. of Koban 30 in 5 gals. of water for each 1,000 sqft. If Pythium root or crown rot is present apply 5-6 ozs. of Koban 30 in 5 gals. of water for each 1,000 sq. ft. Drench (irrigate) the treated area immediately after application to increase performance. A repeat application maybe needed in 5 -10 days.

Add Koban 30 to spray tank with agitator in operation. Keep Koban 30 agitated for uniform application. Tank mixing with other pesticides and nutrients is not recommended. During periods of high daytime temperatures (90 to 100° F), apply Koban 30 in early morning or late afternoon.



If you are unsure of the pathogen present, take a sample and send it to Rapid Diagnostics at Texas A&M. Dr. Colbaugh will give you a correct diagnosis of the disease and control.

www.colbaugh-turf.com

Remember to always read and follow label directions.

UNDERSTANDING PYTHIUM

Summer is upon us which means it is time for Pythium to raise its ugly spores. Although Pythium is a disease that thrives in hot and humid weather, keep in mind that this family of pathogens can infect all turfgrasses under a variety of environmental conditions. Pythium is feared because of the rapidity with which it can multiply and spread. In some cases severe damage and loss of turf can occur in a matter of hours. Pythium is indigenous to our soils, with over twenty species identified since 1954. When the conditions are right, (hot and humid weather + poorly drained soils), the turf will become susceptible to infection.

The symptoms of Pythium Blight appear as small spots or patches of blighted turf that will appear suddenly during warm, wet periods. In the early stages of infection the grass leaves appear water-soaked, slimy (greasy) and darkened.

As the disease progresses, the leaves shrivel and the patches fade from green to light brown. When observing the disease in the early morning, cottony fungal growth (mycelium) can usually be seen on the foliage. In this stage, when there is adequate moisture, the disease can be spread rapidly by mowing equipment, golfers or irrigation, resulting in large areas of damaged turf.

Key Terms Relating to Disease Control Products:

Fungicide -

A substance that possesses the ability to kill fungi in a very short time.

Fungistat -

A substance that inhibits the growth or growth process of a pathogen.

Mode of Action -

Identifies the location in or on the plant in which the fungitoxic or fungistatic activities takes place.

Contact Fungicides -

Effective against fungi that are present on the external parts of the plant.

Penetrant Fungicides -

Chemicals that when applied to the surface of a plant penetrate into the underlying tissue of the plant.



The groundwork for excellence™

www.AndersonsGolfProducts.com